



The countryside charity
Hertfordshire

Annual Review 2022/23



President's welcome



ANNUAL GENERAL MEETING

An invitation to all our members.

We would love to see you at our AGM

on Saturday 7
October

at 2.30pm

Woolmer Green
Village Hall

Light refreshments and a raffle will follow the AGM.

We would be delighted if your spouse, partner or a friend came too.

Just let us know by returning the enclosed form or by email.

See insert for more details

We all in our society care deeply about the Hertfordshire countryside.

I continue to be concerned about the unrelenting and competing demands on the use of the countryside and another year has now passed and we still don't have a Land Use strategy in England, that will help guide these demands. This strategy should be foremost to invigorate town centres together with the full use of brownfield sites. Building on Green Belt land weakens a principle and must be resisted at all times.

I know that as the Countryside charity we continue to lobby our elected officials to fulfil their election promises not to build on

the Green Belt and we provided feedback to the government on their NPPF consultation, but I am dismayed and upset about the dramatic recent increase in the scale of proposed development, virtually all of it on green fields. The work CPRE Hertfordshire is doing to protect these green fields for future generations has never been more important and I am proud to lend my personal support to the charity.

I am very thankful for the work that our wonderful volunteers and staff do, and I encourage everyone to continue to support us in our work.

Sir Simon Bowes Lyon KCVO
President

Late breaking news...

As we go to press, St Albans City & District Council has published their new draft Local Plan for consultation (12 July - 25 September). The Council has used old, inflated 2014 data to calculate its housing target, a minimum of 15,096 new dwellings, and does not take into account the government's direction of travel for increased protection of the Green Belt. We will of course be analysing the Plan in detail and making a robust submittal, and we will provide guidance for our members to do individual submittals as well. Please follow us on Facebook for updates throughout the summer.

A view from the Chair



As you will read, we have had another busy year and our Annual Review gives us a chance to reflect on the great work our team does to protect and promote the Hertfordshire countryside.

An area that is close to my heart is the protection of our waterways and I have been involved in the restoration of the River Beane for 20 years. There are only 250 chalk streams in the world, 200 of them in the UK, and Hertfordshire is privileged to host 11 of them. The WWF says they are rarer than Giant Pandas! The Beane was destroyed in the 1950s by over extraction to supply Stevenage, pumping 18 million litres a day out of this tiny river. After 25 years of campaigning, Affinity Water was allowed by OFWAT to spend £6 million on a pipeline to the lower reaches of the Lea catchment and reduced abstraction from the Beane by 90%. Although the river now

flows more regularly, the aquifers feeding it are still not fully recharged after 5 years.

Works to restore the river have started in Woodhall Park and Waterford and we are very pleased that the Beane has now been selected to represent chalk streams as one of only 11 rivers in England to be part of a national flagship rivers restoration project.

Three small old sewage plants were found discharging into the Beane and Thames Water are restoring one of them at a cost of £2 million, so restoration of this one little river is likely to cost over £10 million, which indicates the enormity of the cost of rectifying decades of neglect of our water infrastructure. Over the past year CPRE have continued to highlight the plight of our waterways and we continue to lobby our MP's to hold water

companies to account for the health of our rivers and streams.

I have very much enjoyed my connection with CPRE Hertfordshire as a volunteer, Trustee and most recently as Chair. However, the time has come for me to hand over the Chair role and I would like to ask your help in identifying my successor. If you know of anyone that would make a good candidate for this role, please encourage them to get in touch with me via our office.

Finally, I thank all of our members, volunteers, staff and Trustees for their support in time and monetary contributions; without these our essential work would be impossible.

Allan McNab
Honorary Chairman



Beside the River Beane heading for Waterford

A message from our chief executive



It's that time of the year again. Time for us to step back for a few moments and reflect on everything that has happened in the past 12 months. We have had another busy year and I am very proud of all the work our volunteers, staff and Trustees have achieved in 2022 – 2023.

Here is a quick fly-by of highlights over the past 12 months. I think it's an impressive story for a small charity and everyone involved should feel proud of the part they have played in protecting our countryside.

Martin Varco
Chief Executive

Highlights: a year in review

July 2022

- We analyse the government's draft Levelling Up and Regeneration Bill, which includes significant changes to the planning system. We write to MPs, specifying seven areas of improvement in the Bill that will strengthen protection of the countryside. (As of June 2023 the Bill is in the Report Stage in the House of Lords.)
- During his campaign for leadership of the Conservative party, Rishi Sunak says "Green Belt land is extremely precious in the UK. Over the last few years, we've seen too many examples of local councils circumventing the views of residents by taking land out of the Green Belt for development, but I will put a stop to it." He also said he would "review official projections of local housing need", which he said were "out of date and were causing too many homes to be built where they were not required." Fine words, but we await changes in legislation and policy to put them into force.

August 2022

- A formal Inquiry is held regarding Taylor Wimpey's proposal to de-register Woodcock Hill Village Green so they can build houses on it. We continue to work with local residents fighting the proposal, and CPRE Hertfordshire Planning Manager Chris Berry appears as an expert witness at the Inquiry. Subsequently, the Inspector makes his determination in favour of Taylor Wimpey, but the High Court gives leave to the Woodcock Hill Village Green committee to appeal the Inspector's decision.

September 2022

- We're dismayed by newly published statistics showing that the scale of development proposed for the London Metropolitan Green Belt has more than doubled in the past six years, with Hertfordshire, Essex and Surrey worst affected.
- We submit our concerns on the draft Hertfordshire Minerals and Waste Local Plan 2040. We believe it under-estimates the amount of secondary and recycled sand and gravel available, and therefore unnecessarily threatens three large sites in the Green Belt that are proposed for huge new quarries: at Briggens Farm near Stanstead Abbots, Coopers Green Lane near Welwyn Garden City, and Ellenbrook Country Park between Hatfield and St Albans.
- Our Children's Art Competition is formally launched and over 400 primary schools in Hertfordshire are invited to submit artworks on the theme of 'Hedgerows Up Close'.



Ellenbrook Fields country park and wildlife habitat, proposed by Herts County Council for a huge gravel quarry
Photo: Eliza Hermann

October 2022

- The Inquiry into Luton Airport's proposed expansion from 18 million passengers per annum (mppa) to 19 mppa gets underway, and we participate as a Rule 6 party fighting the proposal. More air and noise pollution from more air traffic is bad for the planet, bad for local residents, and bad for the countryside.
- We try to contain our outrage as we submit our comments on the Draft South West Hertfordshire Joint Strategic Plan to 2050. The Plan covers half the county and has an over-emphasis on growth to the near exclusion of the natural environment: the word "growth" appears 58 times, while "countryside" appears once, "Green Belt" twice, and "nature" five times.
- We hold our Annual General Meeting where Allan McNab is re-elected Chairman of the charity and Matt White joins our Trustee Board. We also say thank you to outgoing Treasurer John Newbury and elect Steve Wiltshire as the new one. Kevin FitzGerald is elected as an Hon. Life Vice President in recognition of his long service to the charity, and Paul Miner, Head of Policy and Planning at National CPRE, gives an update on CPRE's national campaigning efforts.

November 2022

- We're delighted once again to host our CPRE Awards presentation evening at County Hall. Twenty-five inspiring projects were nominated this year, all of them achieving amazing things for their communities and the local environment. These include the Save Beane Marshes campaign group, the Hertfordshire Walker website, and the volunteers at Heartwood Forest who have produced authoritative guidebooks on trees, wildflowers and butterflies (the books are available to buy on **our website**).
- We are appalled by a new public survey on the "Hemel Garden Communities Vision", which proposes 11,000 dwellings on thousands of acres of land in the Green Belt, immediately adjacent to the Chilterns AONB, on land within Great Gaddesden Parish and between Hemel Hempstead, Redbourn and St Albans. The proposal purports to achieve the regeneration of Hemel Hempstead but this must not be at the expense of the countryside.
- We participate at the planning appeal inquiry into Enso Energy's proposed commercial solar farm at Butterfly Lane between Aldenham and Elstree. The 320-acre site is in the Green Belt and crossed by 14 public rights of way, and is one of few remaining large areas of open countryside in Hertsmeire. The Secretary of State will ultimately determine the appeal. (As of July 2023 we continue to await the decision.)



Heartwood Butterflies
book cover

December 2022

- It's a sad day when the Council votes to adopt the North Hertfordshire Local Plan, with its staggering amount of Green Belt land released for development. The Plan allocates sites for 3,360 dwellings and commercial development at Baldock, 2,100 dwellings at Cockernhoe and Mangrove Green, 900 dwellings in Forster Country north of Stevenage, 971 dwellings at Hitchin, 1,485 dwellings at Letchworth, and many others.
- However, we are cautiously optimistic when Secretary of State Michael Gove announces proposed changes to the National Planning Policy Framework that, if implemented, will strengthen protection of the Green Belt and the wider countryside. But when will the changes come into force? We're still waiting...
- Our reach on social media continues to grow and we now have 2,900 followers. We use our platform to encourage more people to participate in the planning process in their community, and it's gratifying to see more local campaign groups springing up to defend their green spaces, often coming to us for advice.
- We analyse year-end figures which show that merchandise sales continue to grow year on year, with books, greetings cards and Christmas cards proving popular. Details of this year's Christmas cards are on the inside back page and on **our website** – it's never too soon to place your order!



A very sad day, this
beautiful landscape
northeast of Baldock will
be lost forever
Photo: Eliza Hermann

January 2023

- We publish our latest research on brownfield (previously developed) land, and find there is enough identified brownfield land in Hertfordshire for 20,436 new homes. There are also 4,000 empty homes in Hertfordshire. We call on local authorities to bring these homes back into occupancy, and to re-generate all suitable brownfield land, before any more countryside is lost forever to development.
- The Chilterns AONB boundary review gets underway, with Natural England commissioning a specialist consultancy to assess areas for potential inclusion. We are a registered stakeholder in the process, having campaigned to extend the AONB for nearly a decade already.



CPRE Hertfordshire
representatives in an area
proposed for inclusion in
the Chilterns AONB
Photo: Eliza Hermann

February 2023

- We participate as a Rule 6 party at the planning appeal inquiry at Bradmore Way, Brookmans Park, in concert with North Mymms District Green Belt Society and Brookmans Park Action Group, fighting the damaging application for 195 dwellings in the Green Belt. Once again Chris Berry appears as an expert witness. The appeal will be determined by the Planning Inspector and we expect the decision imminently.
- We respond to the Welwyn Hatfield Local Plan Main Modifications consultation (the longest-ever running Examination in Public), and the Affinity Water Resource Management Plan consultation.
- We also launch our Marshcroft fundraising campaign together with the Chiltern Society and Grove Fields Residents Association. This is to fight the largest speculative planning application in all of Hertfordshire, Redrow's outrageous proposal to build 1,400 dwellings in the Green Belt, immediately adjacent to the Chilterns AONB, in a visually prominent landscape east of Tring.



View of Green Belt land
east of Tring, proposed
for 1400 dwellings
Photo: Grove Fields
Residents Association

March 2023

- The planning appeal inquiry into Redrow's Marshcroft proposal gets underway... and goes on and on and on with Redrow calling 16 separate expert witnesses and conducting lengthy cross examinations, finally concluding at the end of April. We're delighted by the show of support from local residents attending the inquiry, including one who amassed nearly 2,500 signatures on her petition opposing the development. We're also pleased to have achieved our fundraising target to pay for specialist representation. The appeal will be determined by the Secretary of State and may take quite some time.
- We're angered that Luton Airport presses ahead with its formal application for a massive expansion to 32 mppa, effectively making moot the earlier application and inquiry for 19 mppa. The Planning Inspectorate accepts this new application for examination, in which we will participate and continue our fight.
- We're dismayed to see the developer appeal Dacorum's refusal of the application for a commercial solar farm on a prominent hillside in the Green Belt and adjacent to the Chilterns AONB at Little Heath Lane near Berkhamsted. The inquiry is scheduled for August 2023.
- On a happier note, we announce the winners of our 2022-23 Children's Art Competition. Roselands Primary in Hoddesdon is the overall winning school. The brilliant and inspiring winning artwork can be seen on **our website**.

April 2023

- We publish our local election manifesto, calling on candidates of all political parties to sign up to seven specific countryside commitments. We're pleased when a number of local leaders of the different parties respond supportively, and we're now following up with them post-election. Read our manifesto on our website.
- Still more planning appeal inquiries. Chris Berry gives evidence as an Interested Party at the inquiry into applications for 720 dwellings in the Green Belt at Chiswell Green in St Albans district. As with the Marshcroft proposal, the Secretary of State will make the decision; the pile in his in-tray is growing.



View from Long Fallow over part of the proposed development site at Chiswell Green
Photo: Alan Moreland

May 2023

- We are shocked when we tally it up: while Redrow's Marshcroft proposal is the largest and most egregious, there have been 37 other speculative planning applications for mass development in the Green Belt just since 1st January 2022 which if built would amount to the loss of 910 acres of open countryside. And this doesn't even include the pre-application proposals of which we are aware, such as the 11,000 dwelling 'Hemel Garden Communities' concept. The Green Belt in Hertfordshire is well and truly under assault by developers.
- We write to all Hertfordshire MPs highlighting these appalling figures, asking them to write to the Secretary of State to urge speedy implementation of the changes to the NPPF affording greater protection of the Green Belt.
- We analyse the 2022 sewage overspill figures for Hertfordshire, and find that sewage flowed into Hertfordshire's rivers, chalk streams and canals for nearly 3,000 hours during the year, over half of it in the north and east of the county.
- We're delighted that the new Chair of East Herts District Council, Cllr. Martin Butcher, selects CPRE Hertfordshire as one of his charities of the year "in recognition of our excellent work" (his words).
- As part of national CPRE's Volunteer Awards programme, we are delighted to recognise Michael Nidd for his outstanding service to CPRE Hertfordshire, see page 11 for details.



Roestock Lane, Colney Heath, one of thirty-eight proposed speculative development sites in the Green Belt in Hertfordshire
Photo: Eliza Hermann

June 2023

- We realise that our small army of volunteers and our four part-time paid staff have: researched and submitted comments on 57 planning applications over the past 12 months, having first screened circa 17,000 of them; analysed and made detailed submittals in two Local Plan consultations; and put in an enormous amount of time preparing for and participating in six separate planning inquiries - the eventual decisions in most of these will have far reaching implications not only for Hertfordshire but nationally as well.
- To thank all of our volunteers and staff for their hard work, we hold a "wine and nibbles in the courtyard" party. Everyone enjoyed the evening and admired our newly refurbished office with its rooftop solar panels.



↑ Our wine and nibbles party in the courtyard

← The newly installed rooftop solar panels powering CPRE Hertfordshire.

Photos: Chris Howe

Planning ahead

I like to look forward in my Annual Report but it really is quite difficult to make any predictions at the moment. We are on our fifth housing and planning minister in six months, or is it the other way round? It's no laughing matter really and the present incumbent, Rachel Maclean, a psychologist and ex-banker, has no discernible relevant experience so the main influence will continue to be the Secretary of State, Michael Gove.

This is important because the big decisions on Green Belt development proposals are piling up. We have been involved in six planning inquiries this last year and three of them involve decisions which have been 'recovered', and none have been determined. That is to say that the Secretary of State has ruled that he will make the decisions and the Planning Inspectors' reports will be merely recommendations.

Two particularly crucial decisions are the Aldenham solar installation at Butterfly Lane which is likely to be highly influential due to heritage as well as countryside

issues, and the 'Marshcroft' application by Redrow for 1400 houses on land east of Tring. The outstanding decision on Luton Airport to increase operating capacity from 18 to 19 million passengers per annum (mppa) has been over-shadowed by Luton Rising's Development Consent Order application for a massive expansion to 32 mppa which seems to render the previous much more modest application moot. We are working closely with our colleagues at CPRE Bedfordshire to fight this damaging proposal and will participate as an Interested Party at the upcoming examination of the application.

It all adds up to a confused picture which is further complicated by the Government's recent consultation on amendments to the National Planning Policy Framework (NPPF). These are being interpreted by the development industry, and indeed some Labour politicians, as an attack on housing targets, as the proposed changes would allow councils to take more account of local conditions in setting their housing targets for Local Plans. This may

be welcomed, but the devil as ever is in the detail.

The figure is changing constantly but at time of writing, 57 local authorities have 'paused' their Local Plan preparation and that includes three in Hertfordshire: Three Rivers, Hertsmere and Dacorum. The political changes as a result of the local elections are unlikely to provide more stability any time soon. Clearly, concerns about the loss of countryside were influential in many places, including Hertfordshire, and whatever one's political persuasions, at least the issues are now being discussed and considered openly.

We have spent significant time and resources in the last year in developing our links with local political leaders and this will continue. Council group leaders are contacting us and a big priority may well be to educate new and existing councillors, many of whom may be coming new to planning. We can help of course and we are exploring the most effective ways of informing our elected representatives about the planning system.

Harking back to Local Plans, this is probably the biggest area of uncertainty for those five councils in Herts which still do not have an up-to-date plan; the three noted above plus Welwyn Hatfield and St Albans. The newly constituted councils in East and North Herts may also wish to start reviewing their Local Plans earlier than anticipated, which we would support in the light of current population and household projections.



Chris Berry with Barrister Joe Thomas at the Marshcroft site on a wet day in February. Photo: Elizabeth Hamilton

Our bread-and-butter work of responding to planning applications continues, with an increase in numbers this year. The major issues of Luton Airport and the Radlett Strategic Rail Freight Terminal rumble on and it can be commercial developments as well as residential that have significant impacts.

We have commented on 38 speculative residential planning applications for a total of over 6000 dwellings in Green Belt countryside since January 2022. Many of these cite the appeal decision at Bullens Green Lane in Colney Heath, a village now under threat from multiple large-scale housing developments. The cumulative impact of this relentless attack on and erosion of the Hertfordshire Green Belt will be a key campaign issue for us in coming months.

We remain concerned about ground-mounted solar generation, with ten active large-scale projects and more in the pipeline. Several of these will have hugely damaging impacts on the Green Belt, the Chilterns AONB, and the Rural Area Beyond the Green Belt throughout the County, and we will coordinate our responses with the very welcome national CPRE campaign for roof-mounted solar energy generation and support for renewables in the right locations.

This topic requires careful consideration due to our support for renewable energy and the climate change amelioration necessary to protect the countryside. It is a complex balancing act, and we may need to select our priorities for protection, and views and

comments on our position would be appreciated.

As you can see, there is plenty to be getting on with and we are completely indebted to our team of planning volunteers who scour the council lists of applications, coordinated in our smartly refurbished office by Linda Brookes, whose continuing professionalism and commitment keeps the show on the road.

The importance of what we are doing will only increase in the year ahead. The precious Hertfordshire countryside is under unprecedented pressure and we continue to be the front line of defence.

Chris Berry,
Planning Manager

Volunteer News

Recognition for long-serving volunteer Michael Nidd



We are delighted to recognise Michael Nidd with the National CPRE Special Contribution Award. He recently retired from active volunteering for CPRE Hertfordshire, after 25 years' continuous service in a multitude of roles.

Michael served two full terms on our Board of Trustees and has provided considerable specialist input and expertise on aviation issues, particularly the ongoing threat of expansion at Luton Airport. He has made extensive contributions on local planning matters, including input on numerous Local Plan consultation submissions, and over the past several years conducting a weekly review of planning applications in Dacorum Borough to identify potential threats to the Green Belt and the Chilterns Area of Outstanding Natural Beauty. Michael has also helped with many of our marketing and fundraising efforts, including for many years helping out on our



stall at the Herts Show and at local village fetes. He remembers vividly the day that the CPRE Herts gazebo nearly blew away on Redbourn Common.

Michael is passionate about protecting the countryside, and throughout his 25 years' service he has brought his sharp intellect and his wry humour to all of his volunteering activities.

2022 Children's Art Competition

2022 saw over 100 entries being received from schools across Hertfordshire. It's very rewarding to receive positive feedback from schools about the competition, one said:

"Our school has loved your brief based on a hedgerow up close. It inspired us to face the cold weather and explore the hedgerows around our school field to really discover what a hedgerow is, what it is made from and what creatures make this place their home. Based on this, we researched the hedgerow in different seasons, wildlife within a hedgerow and the plants/fruit that grow in a hedgerow. We loved it!"

The competition is open to all primary school children in Hertfordshire and encourages them to engage with the natural environment around them. This year we asked the schoolchildren to produce a piece of artwork which captured Hedgerows up Close. Prizes include gift vouchers, certificates and £500 for the art department of the Overall Winning School. Schools in Abbots Langley, Watton at Stone and Cheshunt were amongst those with winning entries.

Terry Over, one of our Trustees, visited the Overall Winning School, Roselands Primary School in Hoddesdon, to present prizes and certificates at an assembly. After his visit he told us that:

"Like many of our primary schools, Roselands recognises the positive impact that art plays in the development and wellbeing of all young people. The corridors are lined with pupil's artwork of varied media and the buildings nestle beautifully

within surroundings of trees, hedgerows and planted landscape, so outdoor learning plays an important part in school life."

To find out more about his visit and see all the winning artwork please take a look at our website.

Gill Bryant
Competition Coordinator



Karin aged 7



Oscar aged 4



Mya aged 4



Harriet aged 11



Lily aged 10



Evelyn aged 8



Sophie aged 6



Daisy Aged 10

Treasurer's Report

Year ended 31 December 2022



Steve Wiltshire
Treasurer

In 2022, the charity had net expenditure of £43,063. The unrealised loss in the value of investments was £31,727, giving a net reduction in funds for the year of £74,790.

Income

The total income for 2022 was £55,321. The Charity had strong income generation in 2022, with donations, fund raising and investment income all showing good increases vs. 2021. Overall income in 2022 was up 20% vs. 2021.

Expenditure

Total expenditure for 2022 was £98,384. This was higher than 2021 but in line with budget, and included a first full year for the Charity with a paid Chief Executive to help focus, deliver and grow its charitable activities. Legal Fees included £7,361 related to the Charity's participation in the public inquiry for Luton Airport's application to increase passenger numbers.

Funds

As at 31 December 2022, total funds amounted to £553,981. All are unrestricted.

Tangible Fixed Assets

Additions in 2022 of £15,146 reflect the start of refurbishment work of the Charity's office in Welwyn Village.

Reserves

The Trustees approved a new reserves policy in 2021. This considered and documented how the Charity would utilise unrestricted funds, including for a period of several years where the Charity reports net expenditure in the year.

Outlook

The Charity will continue with its activities in line with the Three Year Strategic Plan and Annual Operating Plan. Costs will be vigilantly monitored against the annual budget agreed by the Trustees.

Financial Summary

Wagstaffs have agreed the financial summary on page 14 as being consistent with the full financial statements for the year ended 31 December 2022. These were prepared in accordance with the applicable Charities SORP (Statement of Recommended Practice).

These summarised accounts may not contain sufficient information to allow for a full

understanding of the financial affairs of the charity. For further information, the full annual accounts and the independent examiner's report on those accounts should be consulted. Copies can be obtained from CPRE Hertfordshire. The accounts were approved by the Trustees on 27 April 2023 and have been submitted to The Charity Commission.

JA McNab, Hon. Chairman

S E Wiltshire, Hon. Treasurer

Independent Examiner: J E Fox,
Wagstaffs, Richmond House,
Walkern Road, Stevenage,
SG1 3QP.

	Year Ended 31.12.22	Year Ended 31.12.21		Year Ended 31.12.22	Year Ended 31.12.21
Income			Expenditure		
DONATIONS AND LEGACIES			CHARITABLE ACTIVITIES		
Donations	18,930	12,683	Personnel costs	71,041	65,708
Legacies	0	39,000	Office expenses	5,493	8,271
Subscriptions	24,292	24,345	RAISING FUNDS		
FUNDRAISING EVENTS	3,228	2,428	Publicity	8,850	7,165
INVESTMENT INCOME			SUPPORT COSTS		
Deposit a/c interest	1,515	33	Premises	3,479	2,909
Investment Fund income	7,356	6,635	Accounting & legal fees	9,521	2,040
Total Income	55,321	46,124	Total Expenditure	98,384	86,093
Surplus (Deficit)	(43,063)	(39,969)			
Balance Sheet					
	31.12.22	31.12.21		31.12.22	31.12.21
FIXED ASSETS			Represented by:		
Freehold Property	128,203	115,000	General Fund	334,858	389,730
Tangible Fixed Assets	2,943	1,000	Jones Legacy	183,355	199,249
Investments	287,242	258,969	Davis Memorial	35,768	39,792
Net Current Assets	135,593	253,802	Jubilee Appeal Fund	0	0
Total Net Assets	553,981	628,771	Total Funds	553,981	628,771

CPRE Hertfordshire officers and staff as at July 2023

President:

Sir Simon Bowes Lyon, KCVO

Honorary Life Vice Presidents:

Dorothy Abel Smith, MBE,
Nicholas Halsey TD, DL, Dr
Mervyn Miller, Anthony Eastwood,
Stephen Pollock-Hill, David
Irving, Elizabeth Hamilton, Kevin
FitzGerald TD, DL

Honorary Vice Presidents:

Ralph
Abel Smith, the Countess of
Verulam, Peter Waine

Officers:

Hon. Chairman: Allan McNab,
Vice Chair: Alison Young,
Hon. Treasurer: Steve Wiltshire

Board of Trustees:

Allan McNab, Alison Young, Terry
Over, Elizabeth Hamilton, Claire
Russell, Steve Wiltshire, Matt
White, Claire Trbovic

Staff:

Chief Executive: Martin Varco,
Planning Manager: Chris Berry,
Planning Assistant: Linda Brookes,
Office Manager: Gill Bryant

**CPRE Hertfordshire is a
Charitable Incorporated
Organisation.**

Registered charity number:
1162419.

Bankers: Barclays Bank plc,
Welwyn Garden City

CPRE Hertfordshire
31a Church Street, Welwyn, Hertfordshire AL6 9LW
01438 717587
office@cpreherts.org.uk
www.cpreherts.org.uk



CPRE Hertfordshire Merchandise

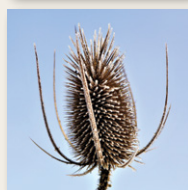
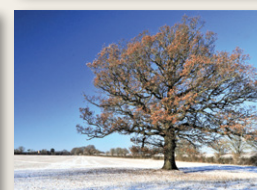
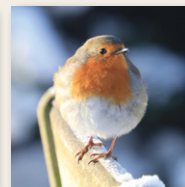
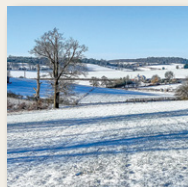
You can see our full product range and order online at <https://www.cpreherts.org.uk/get-involved/merchandise/> and pay with your debit or credit card or use the order form enclosed with this publication to pay by cheque or BACS. £4 p&p per order.

Please support us by placing an order today. Each sale helps fund our work to protect, promote and enhance Hertfordshire's countryside.

Christmas Cards

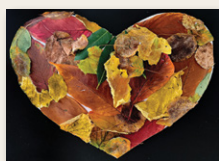
A lovely selection of beautiful Hertfordshire scenes, cards are A6 Landscape or 13cm square.

Pick'n'Mix, 70p each with a minimum order of 5 cards - you choose how many of each image.

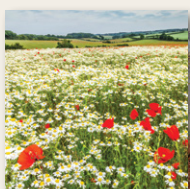


Blank Greetings Cards — perfect for every occasion

Children's nature art - Pack of 5 with one each of 5 different images taken from our popular Children's Art Competition. Size: A6. £4.00 per pack



Four Seasons - four each of two exclusive Hertfordshire scenes per pack, Spring Bluebells and Winter Sunset or Summer Meadows and Autumn Mists. Cards measure approx. 15 cm square. All images by local award-winning photographer Chris Howe. £8 per pack



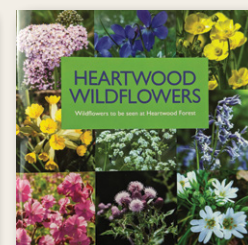
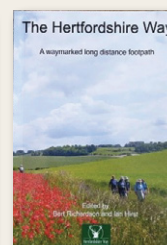
Books

We have a lovely selection of books which make great Christmas Gifts:

Heartwood Arboretum, Heartwood Butterflies and Heartwood Wildflowers, Beautiful full-colour wildlife guidebooks packed with photographs and descriptive information. £5 each

Old Oak & Little Acorn £12.99, and **The Happy Hedgerow** £10.99, charming children's books by local author Elena Mannion, with detailed full colour illustrations by Erin Brown. They cover important conservation themes and are suitable for children aged from four.

Outstanding walking guidebooks. **The Hertfordshire Way**, £10, the official guide to the 195 mile waymarked footpath around Hertfordshire. **Walking The Lea Valley Walk**, £12.95, part of the widely-acclaimed Cicerone series of walking books.



Heavy Cotton Tote Bags

Eye catching and functional, they also make great little gifts. Approx. 36 x 41 cm with long handles to fit comfortably over the shoulder. £4 each



Price Increase - unfortunately our p&p charge is increasing from £3 per order to £4 per order. The p&p charge has been held at £3 for several years, however, the annual increase in postage means we have made the difficult decision to put it up. We apologise for the increase and hope you will continue to support us by purchasing our merchandise.



The countryside charity
Hertfordshire



Looking across the upper
Bulbourne Valley from near Tring

"To my daughter, I leave this
beautiful countryside to you"

Leaving a gift in your will helps
CPRE Hertfordshire protect the
places you love.

Email office@cpreherts.org.uk or call **01438 717587** for
more information

CPRE Hertfordshire is Registered Charity no. 1162419